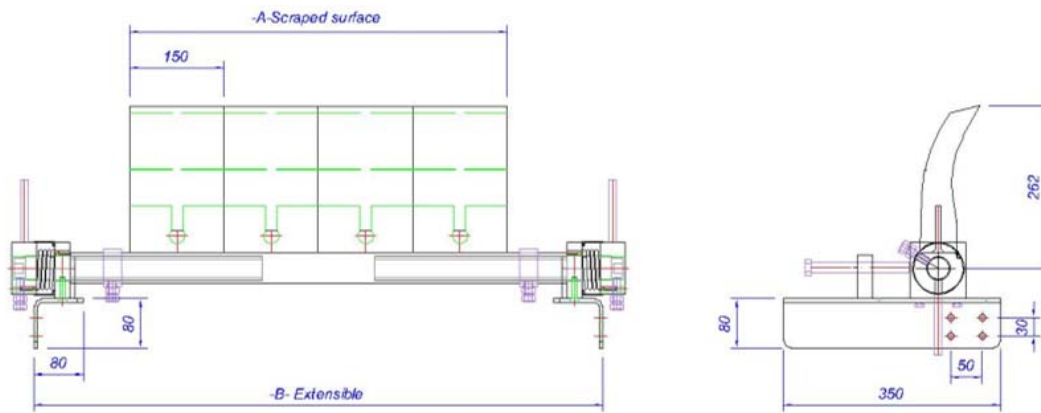


'INBI' S-150 Mod. 'P-PU STRONG'



SERIE	MODEL	BELT WIDTH (mm)	Blades (quantity)	-A- Scraped surface	-B- minimum	-B- maximum
S-150	P-PU STRONG	400	2	300	552	904
		500	3	450	676	1.075
		650	4	600	800	1.200
		750	5	750	924	1.324
		800	5	750	924	1.324
		900	6	900	1.048	1.448
		1000	6	900	1.172	1.572
		1.200	8	1.200	1.296	1.696
		1.400	9	1.350	1.544	1.944
		1.600	10	1.500	1.688	2.088
		1.800	12	1.800	1.916	2.316
		2.000	13	1.950	2.164	2.564

Notes:

- ◆ To get maximum 'B', should extend the axe.
- ◆ Available for another belt widths and special dimensions.
- ◆ Option of the total or partial manufacturing in INOX.
- ◆ Available in ATEX version (explosives atmospheras)

NOMENCLATURE

Serie (1), Model (2), Belt width (3), Versión (4): STANDARD, INOX, ATEX, DE -special dimensions-.

Example:

S-150 P-PU-STRONG 800 INOX
 (1) (2) (3) (4)

Contact to our Technical Department for any doubt or consult that you require.